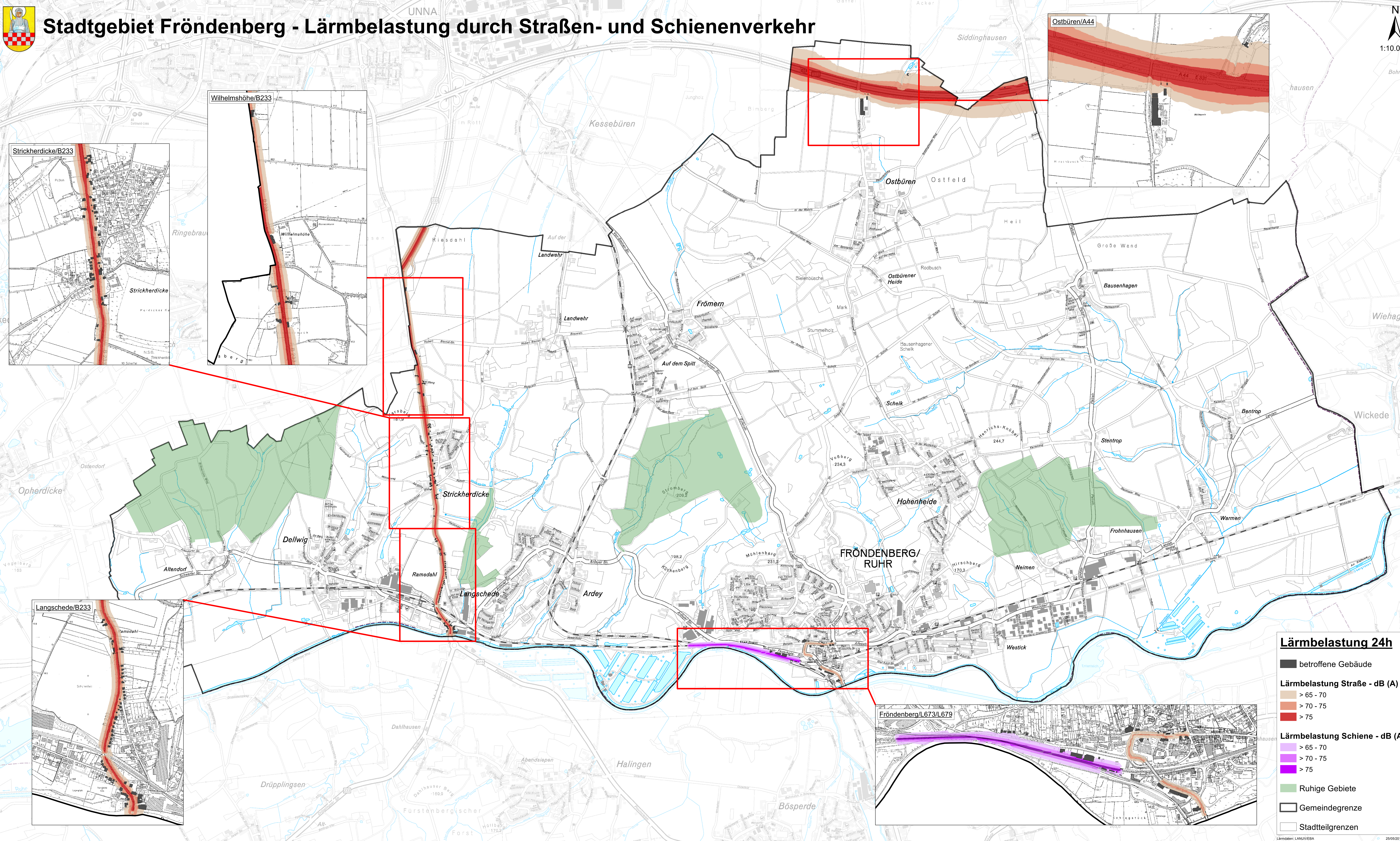
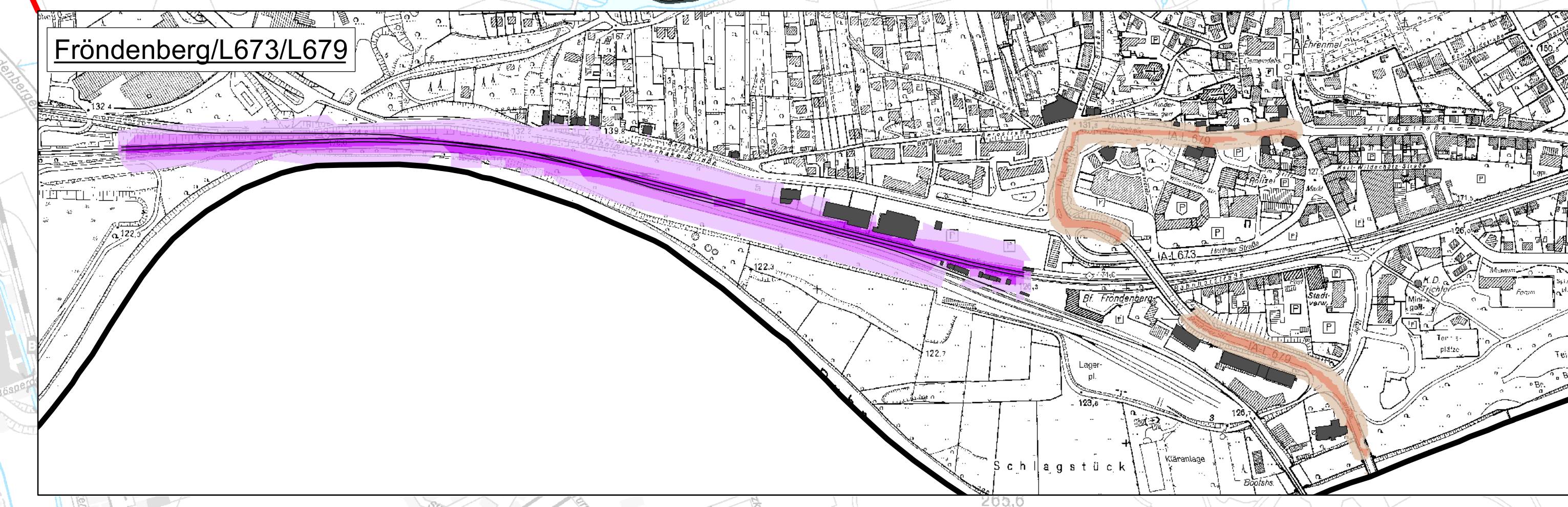
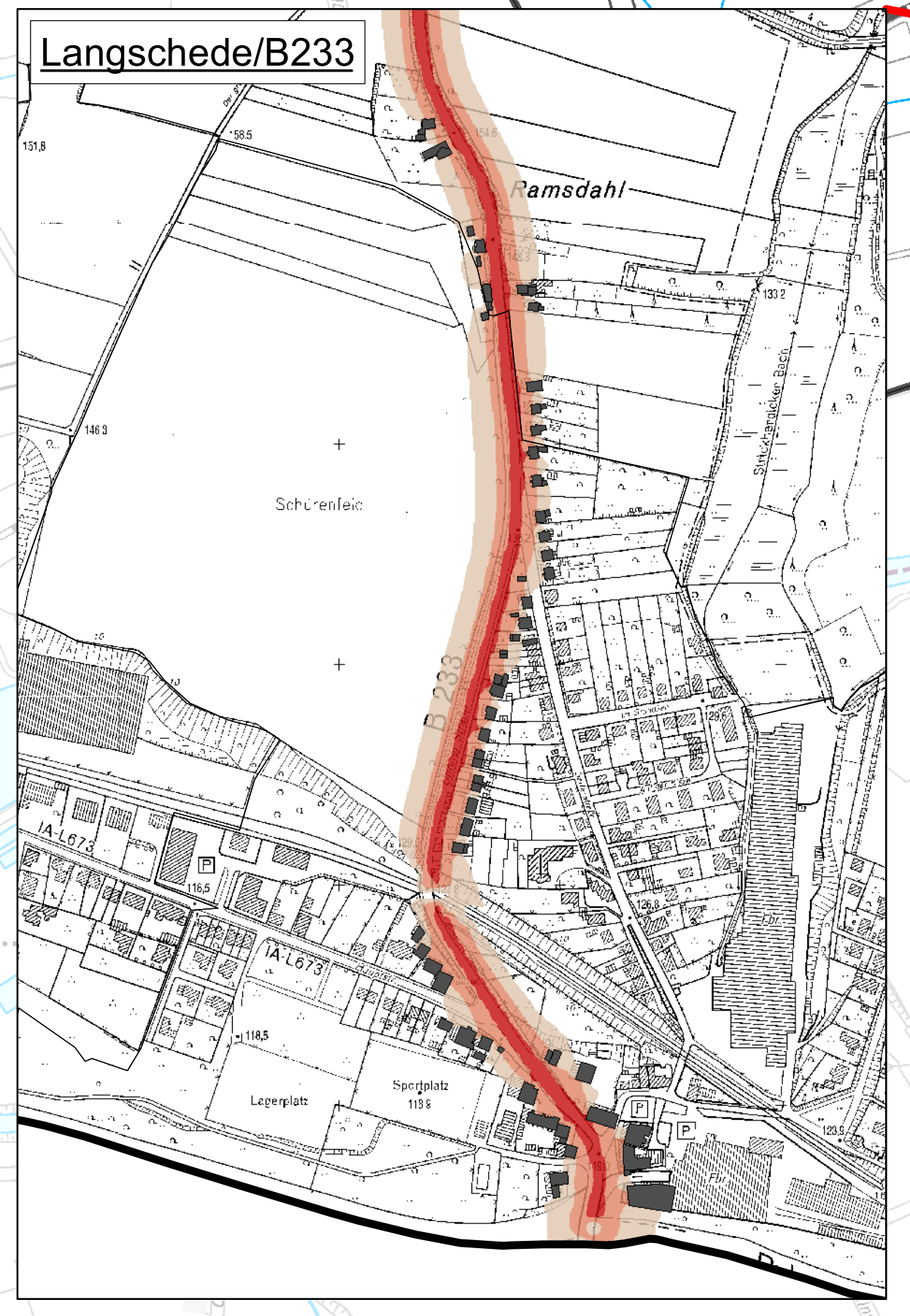
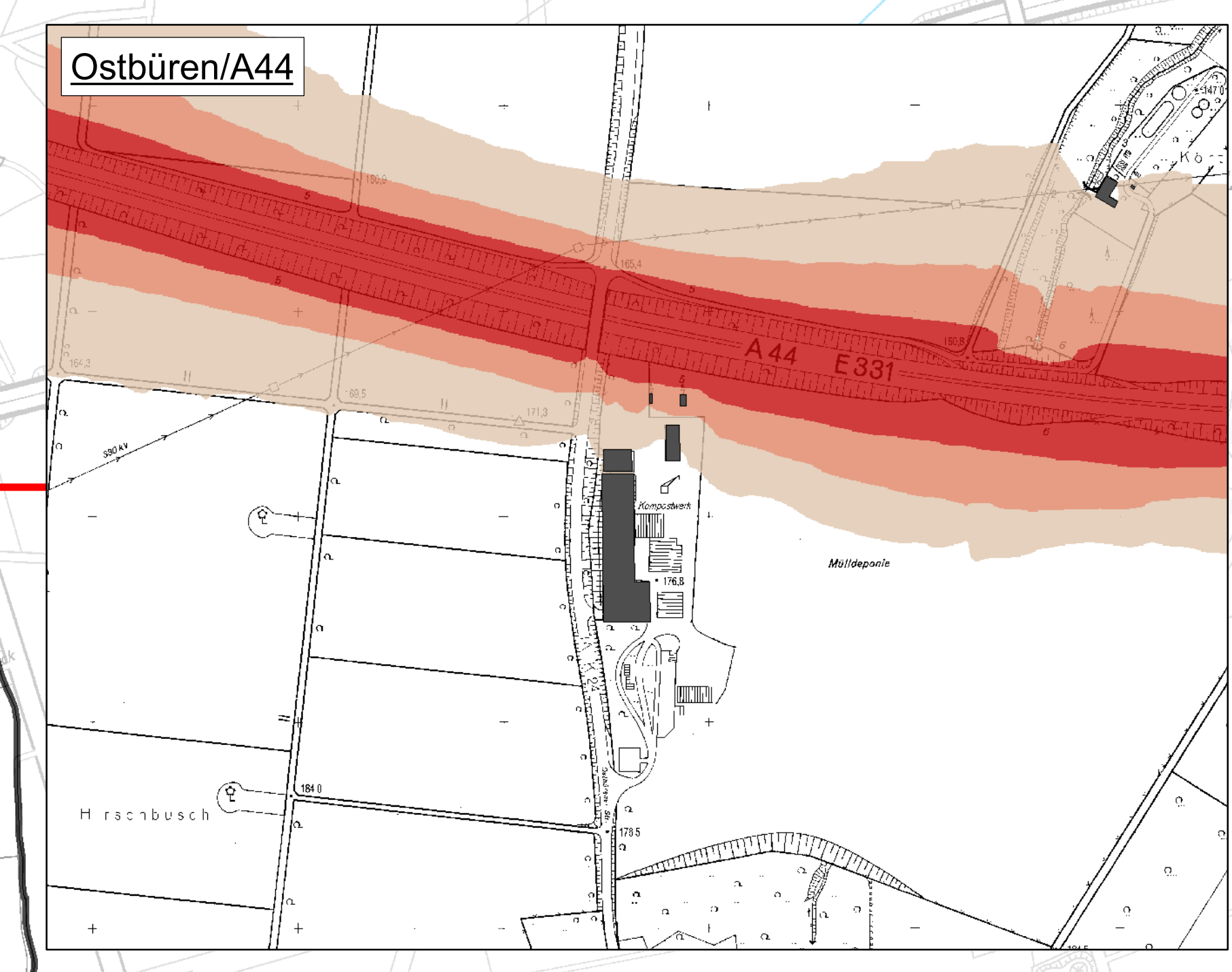
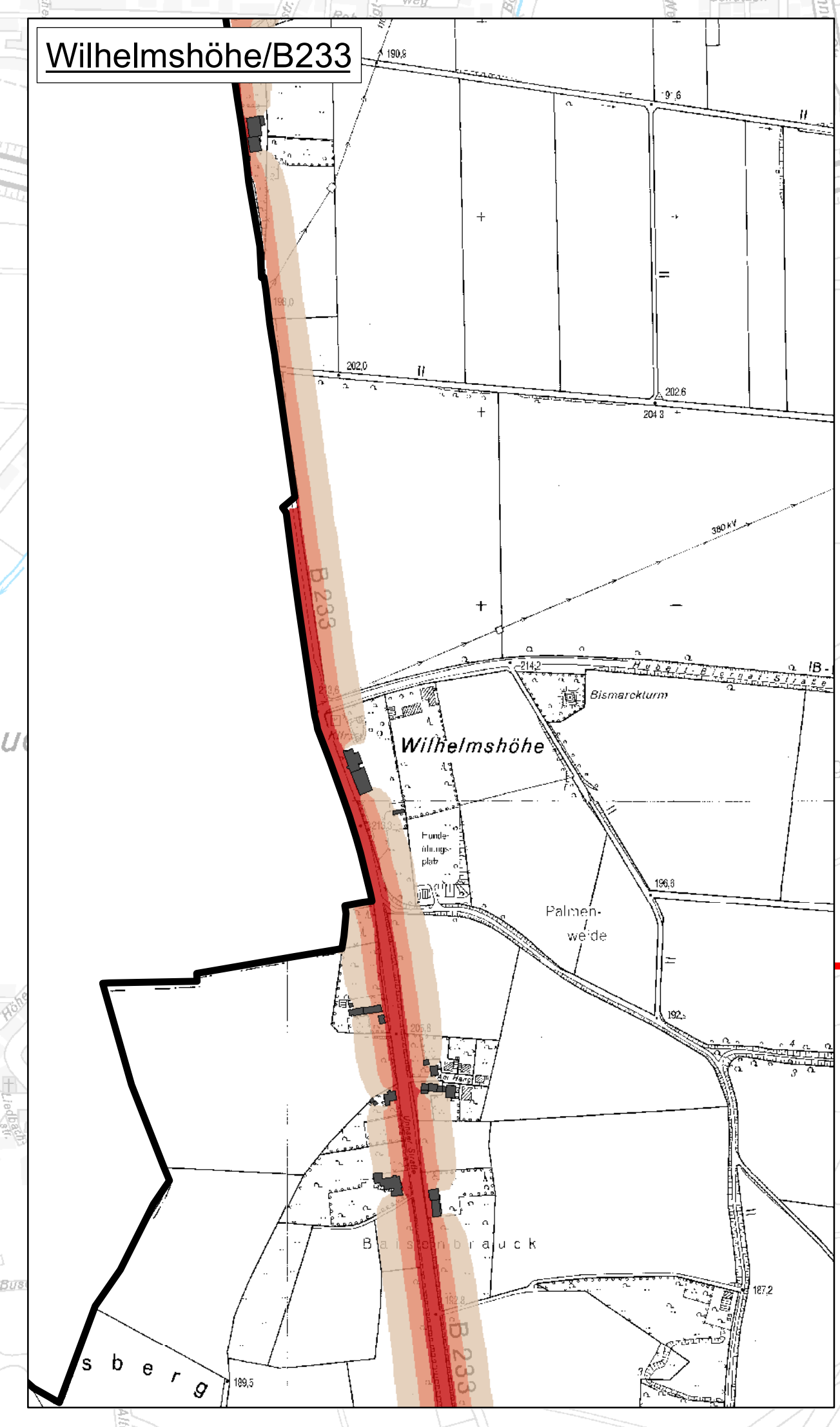




Stadtgebiet Fröndenberg - Lärmbelastung durch Straßen- und Schienenverkehr

N
1:10.000



Lärmbelastung 24h

- betroffene Gebäude

Lärmbelastung Straße - dB (A)

- > 65 - 70
- > 70 - 75
- > 75

Lärmbelastung Schiene - dB (A)

- > 65 - 70
- > 70 - 75
- > 75

- Ruhige Gebiete
- Gemeindegrenze
- Stadtteilgrenzen

Lärmdaten: LANUV/BEA 25/05/2018 Gr.